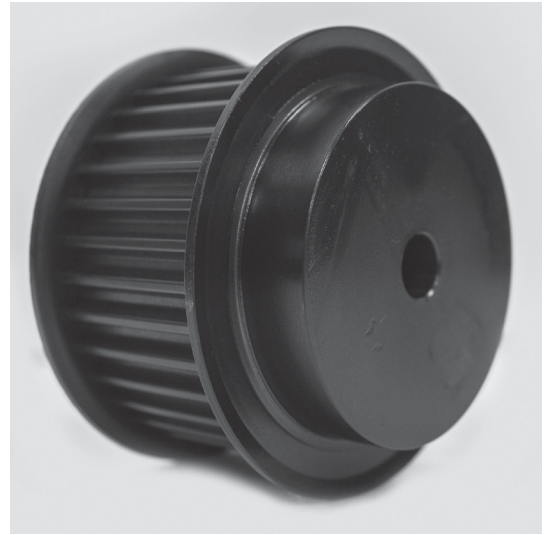


POWERHOUSE MX™

TIMING PULLEYS

(Compatible with Poly Chain® GT® Carbon belts)

8 mm Pitch
For 36 mm Wide Belts
Steel/Iron
Black Oxide Plating



Part Number	No. of Teeth	Type	Pitch Dia. (in)	Out. Dia. (in)	Flange Dia. (in)	Bore/Bushing	Face Width (in)	Overall Length (in)
22-8MX36-6FS6	22	6F	2.206	2.143	2.559	0.500	1.859	2.438
25-8MX36-6FS6	25	6F	2.506	2.443	2.953	0.500	1.859	2.438
28-8MX36-6FS6	28	6F	2.807	2.744	3.150	0.500	1.859	2.438
30-8MX36-6FS6	30	6F	3.008	2.945	3.346	0.500	1.859	2.438
32-8MX36-1210	32	A1F	3.208	3.145	3.543	1210	1.859	1.859
32-8MX36-6FS6	32	6F	3.208	3.145	3.543	0.500	1.859	2.438
33-8MX36-1610	33	A1F	3.308	3.245	3.819	1610	1.859	1.859
34-8MX36-1610	34	A1F	3.409	3.346	3.819	1610	1.859	1.859
34-8MX36-6FS6	34	6F	3.409	3.346	3.819	0.500	1.859	2.453
35-8MX36-1610	35	A1F	3.509	3.446	3.938	1610	1.859	1.859
36-8MX36-1610	36	A1F	3.609	3.546	3.938	1610	1.859	1.859
36-8MX36-6FS6	36	6F	3.609	3.546	3.938	0.500	1.859	2.516
37-8MX36-1610	37	A1F	3.709	3.646	4.156	1610	1.859	1.859
38-8MX36-1610	38	A1F	3.810	3.747	4.156	1610	1.859	1.859
38-8MX36-6FS6	38	6F	3.810	3.747	4.156	0.500	1.859	2.516
39-8MX36-1610	39	A1F	3.910	3.847	4.331	1610	1.859	1.859
40-8MX36-2012	40	A1F	4.010	3.947	4.331	2012	1.859	1.859
41-8MX36-2012	41	A1F	4.110	4.047	4.331	2012	1.859	1.859
42-8MX36-2012	42	A1F	4.211	4.148	4.687	2012	1.859	1.859
45-8MX36-2012	45	A1F	4.511	4.448	5.005	2012	1.859	1.859
48-8MX36-2012	48	A1F	4.812	4.749	5.157	2012	1.859	1.859
50-8MX36-2012	50	A1F	5.013	4.950	5.320	2012	1.859	1.859
53-8MX36-2012	53	A1F	5.314	5.251	5.625	2012	1.859	1.859
56-8MX36-2012	56	A1F	5.614	5.551	5.945	2012	1.859	1.859
60-8MX36-2517	60	A1F	6.015	5.952	6.375	2517	1.859	1.859
63-8MX36-2517	63	A1F	6.316	6.253	6.772	2517	1.859	1.859
67-8MX36-2517	67	D1F	6.717	6.654	7.231	2517	1.859	1.859
71-8MX36-2517	71	D1F	7.118	7.055	7.575	2517	1.859	1.859
75-8MX36-2517	75	D1F	7.519	7.456	7.867	2517	1.859	1.859
80-8MX36-3020	80	B1F	8.020	7.957	8.386	3020	1.859	2.000
90-8MX36-3020	90	B1	9.023	8.960	-	3020	1.859	2.000
112-8MX36-3020	112	C2	11.229	11.166	-	3020	1.859	2.000
140-8MX36-3020	140	C3	14.036	13.973	-	3020	1.859	2.000
180-8MX36-3020	180	C3	18.046	17.983	-	3020	1.859	2.000
224-8MX36-3525	224	C3	22.457	22.394	-	3525	1.859	2.500

